

# Dovestone Park

## Lodges

*A luxury development of spa lodges*

[www.dovestonpark.co.uk](http://www.dovestonpark.co.uk)



# Welcome...

*This idyllic location is the perfect setting for your holiday, whether you are looking for a relaxing break with a group of friends, an exciting activity holiday for the family or a romantic break for two, there can be no better place to stay than in one of our luxury 2 bedroom lodges in the truly magnificent location of Dovestone Park.*



## Dovestone Park

Dovestone Park borders the beautiful Peak District National Park, is some 3 miles from the Pennine Way and nestles at the foot of the beauty spot of Dovestone reservoir with its spectacular scenery and walks. It is here that you will find true countryside luxury in our 2 bedroom lodges set within this stunning moorland scenery, boasting a wealth of facilities for walking, cycling, sailing, fishing and bird watching.

Greenfield Village is on the doorstep of Dovestone Park, providing local amenities, shops and welcoming countryside pubs. It is within easy reach of Bronte Country, the 'Last of the Summer Wine' town of Holmfirth and visitor attractions such as the Blue John Caves, Buxton Opera House and the Saddleworth Canal. Amongst the peace and tranquillity of the National Park, it is easy to forget that Dovestone Lodges are less than 13 miles away from the centre of Manchester. Take the train from the local village station and in 30 minutes you will be in the heart of this vibrant city with all its cultural, sporting, shopping and dining experiences at your convenience.





# Make the most of your holiday

## Family Togetherness

At Dovestone Park you can spend quality time with your family in the Peak District National Parks spectacular landscape. Here reservoirs, moors, gritstone edges and miles of hiking trails and paths are all here waiting for you to explore. Whatever the weather, everyday can be different giving you and your family the perfect opportunity to re-connect and create your own perfect holiday experience.

## Reunions & Celebrations

Why not gather your friends or family here together for that special occasion such as a birthday, anniversary or just a break together to catch up and enjoy good company.

## Romantic Breaks

Escape to Dovestone Park for a romantic getaway with the one you love. Take gentle walks through the peak district countryside and visit nearby villages and sample the local hospitality. Enjoy intimate alfresco dining and a Hot Tub under the stars, relax, spend quality time together and make the most of your romantic break.



*Escape to Dovestone Park  
for a romantic getaway  
with the one you love...*



# Adventures abound

---

## A Walkers Paradise

The Peak District National Park offers a spectacular variety of scenery for walking and rambling routes - from limestone dales to dramatic high moorlands. There are walks to suit individuals, families and groups - whether you want a challenging hike or a short stroll. Whilst Dovestone Reservoir itself is a popular location providing a circular walk of 2.5 miles offering stunning views and giving access to two further reservoirs, Greenfield and Yeoman Hey to the north.

## Cycle Routes

Cycling is a fun healthy way to explore the beautiful countryside of the Peak District and there are many local cycling trails ideal for family cycling, whilst remote moorlands bridleways provide a challenge for experienced mountain bikers. Major trails in the Peak District include the Longendale near Crowden which is a former railway line, and further to the south are Monsal, Tissington and High Peak trails. You can bring your own bikes to Dovestone Park or hire them from a nearby hire centres and dedicated bike stands are provided at all lodges.

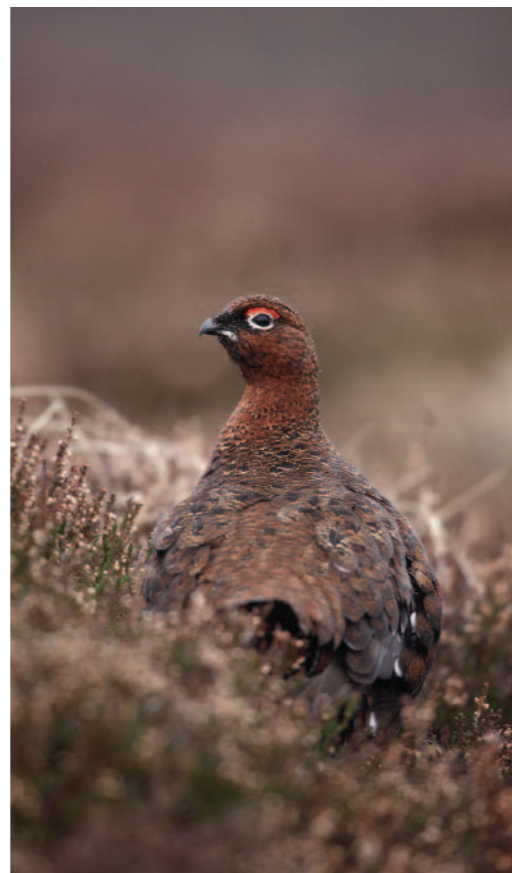


## Sailing & Windsurfing

Take to the waters at one of the Peak District's national reservoirs and you will find a great way to escape the hustle and bustle of daily life. Sailing clubs operate from the nearby Dovestone reservoir as well as Carsington, Rudyard, Combs, Errwood and Torside. Dovestone sailing club caters for novices through to the experienced sailor.

## Wildlife & Bird Watching

Dovestone Lodge's lie within an area of the Peak National Park known as Dark Peak which forms a globally important treasure trove of wildlife habitats. The beautiful RSPB reserve of Dovestone is a bird watchers paradise where skylarks, meadow pipits, red grouse, curlew, ring ouzel, merlin and peregrine falcons can be spotted. A walk in these beautiful moors and gritstone crags will find you amongst the flora and fauna of cotton grass, bilberry and cloudberry, whilst don't forget to keep an eye out for wild red deer and mountain hares.



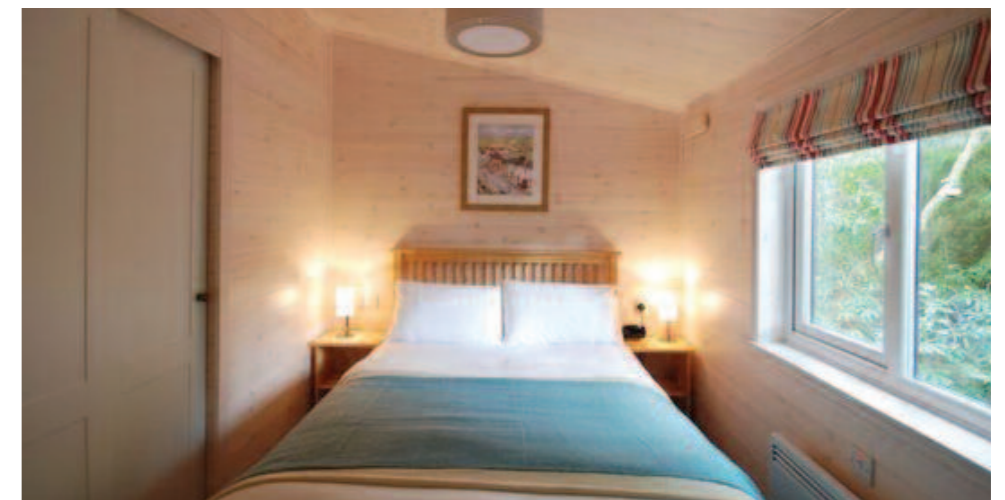
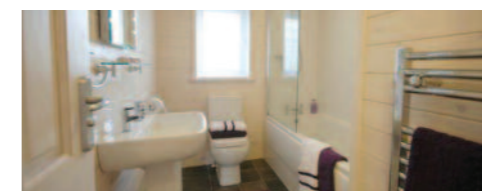
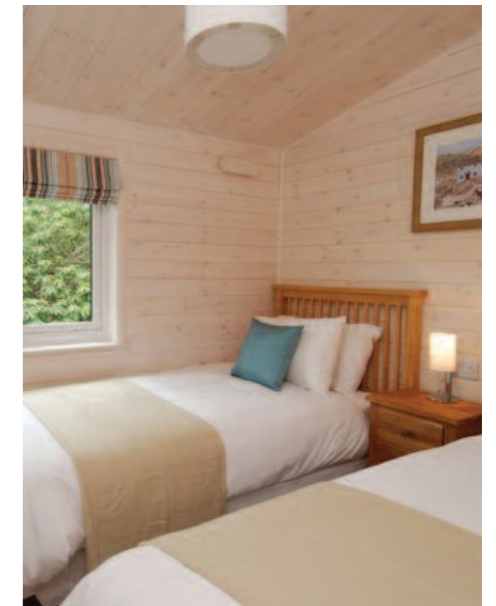


# Your luxury lodge

---

These luxury 2 bedroom, 4 person Lodges are stylishly furnished and incorporate a master bedroom with en-suite, a further twin bedroom, a family bathroom and a spacious living space with a lounge, kitchen and dining area. Modern kitchens include all the convenience of home with oven, microwave, hob, extractor, fridge freezer and dishwasher, the lodges are insulated to a high standard and include central heating and a focal point log effect fire so you will always be snug no matter what the weather outside.

A get away break in the country is great, but this may not mean you want to be cut off completely from the outside world, so to that end, each lodge includes a flat screen TV to the master bedroom and the main living area, where you will also find a DVD/CD player and a HDMI connector for your laptop. To the outside of your cabin you will find double aspect verandas with outdoor furniture for alfresco dining and your own outdoor hot-tub for the ultimate relaxation experience. Relax in the hot water and let the powerful jets massage away your stress. Hot-tubs are discretely positioned on the deck outside your lodge for your exclusive use. Your cabin comes complete with all you need for your break - toaster, cutlery, pots and pans, bedding & towels are all provided, just bring along any consumables you want during your stay and enjoy the luxury of the Dovestone Park experience.





# Useful information

## Booking Your Holiday

Our website [www.dovestonepark.co.uk](http://www.dovestonepark.co.uk) provides full details of parks, lodges, floorplans and availability. To book by phone, please call us on 0115 901 3000. We will do our best to help you find the perfect lodge to suit your requirements.

## Paying for Your Holiday

An initial deposit payment of 15% is due when you book your holiday, with the balance being payable 6 weeks before your holiday start date. If the balance is not paid by this date, we have the right to cancel your booking and you will forfeit your deposit. A charge of 1.5% applies to credit cards, but there is no charge for debit cards.

## Party Make Up

The booking must be made by somebody over the age of 18 years of age and at least one adult has to stay in each lodge. The total number of people occupying the lodge must not exceed its stated capacity, although babies under two do not count for this purpose.

## Groups and Single Sex Parties

Any group or all male and all female parties are accepted only at our discretion and with our specific permission. We ask that all groups and single sex parties respect the need for privacy and quiet by other guests and noise is kept to a minimum after 11pm. We ask that all groups make us aware at the time of booking to enable us to locate you as closely as possible.

## Your Responsibility

Dovestone park is a peaceful place to stay and we ask that guests respect the environment. The person making the booking is responsible for the behaviour of all members of their party and we have the right to ask any person who is noisy or disruptive to leave, without a refund. Please ensure that you leave the lodge clean and tidy and report any damage or breakages to us.

## Occupancy

Your lodge will be available to occupy from 4pm on the day of your arrival. It must be vacated by 10am on the day of departure in order to give housekeeping time to clean it for the arrival of the next guests.

## Cancellation

If you have to cancel your holiday for any reason please let us know as early as possible and confirm it in writing. If you cancel more than 6 weeks before the start of your holiday you will only forfeit the deposit paid. If the cancellation is less than 6 weeks before the start of your holiday then you will be liable for the full cost, unless you have taken out the Cancellation Guarantee Plan.

## Cancellation Guarantee Plan

The Cancellation Guarantee Plan can be purchased at the time of your booking, to relieve you of the requirement to pay for the balance of the cost of your holiday, if you have to cancel for a number of reasons. These reasons include death or disablement of any member of your party (immediate family member or close business associate), pregnancy, quarantine, jury service etc. A proportionate refund will be given if you have to return home early for any of these reasons.

## Linen

All cabins come complete with freshly laundered duvets, sheets and pillows and beds are made up for your comfort on arrival.

## Towels

We provide each guest with a bale of beautifully soft towels to use during their stay at Dovestone Park, should you wish to take advantage of all that the Peak District has to offer we recommend you bring extra towels for any trips off site, as well as additional towels for use with the hot tub.

## Welcome Pack

To welcome you to Dovestone Park it is our pleasure to provide you with a complimentary welcome pack on arrival, containing a few basic essentials: bread, milk, butter, etc. to enable you to recover from the journey.

## Barbecues

Each lodge has a barbecue for your use during your stay, however these are not to be used on the decking of your lodge for safety reasons. Barbecue fuel can be purchased from our on site customer services office.

## Kitchen Equipment

Every lodge is equipped with fridge / freezer, oven, hob and dishwasher. We also provide you with a complete set of cooking equipment, cutlery and crockery.

## Babies

Cots and high chairs can be hired for an additional charge of £10 for each item. Please note that cot linen is not provided.

## Parking

There is a car parking space immediately adjacent to each lodge for your own use.

## Wi-Fi Access

Wi-Fi access is available in your lodge subject to local network conditions and may not be available 24hrs a day.

## Smoking

All accommodation is non-smoking, except on the veranda of the lodge. An additional cleaning charge of £150 will be made to those failing to observe this rule.

## Pets

Pets are welcome on selected lodges subject to an additional charge (please see booking details on line), no charge is made for guide dogs. Please bring your pet basket with you and keep all pets in the lounge area of the lodges with hard flooring and not in bedrooms. Please keep pets off bedding and other soft furnishings. Pets may not be left unattended in lodges and any damage will be charged for. Dangerous breeds are not allowed in the park. Just one pet is allowed in the lodge although two small ones may be allowed by prior arrangement.

## Terms & Conditions

In making a booking you are agreeing to our terms and conditions. A copy of the terms is available on our website.

## Find us

### Dovestone Park

Next to Dovestone Reservoir  
Bank Lane, Greenfield  
OL3 7NF

Tel: 0115 901 3000

Email: [information@dovestonepark.co.uk](mailto:information@dovestonepark.co.uk)  
[www.dovestonepark.co.uk](http://www.dovestonepark.co.uk)

